



**LEURA PUBLIC SCHOOL**  
Cnr Mount Hay Rd and Willow Park Ave  
Leura, 2780  
ph : 4784 1251 fax : 4784 3156  
email : [leura-p.school@det.nsw.edu.au](mailto:leura-p.school@det.nsw.edu.au)

*respect*

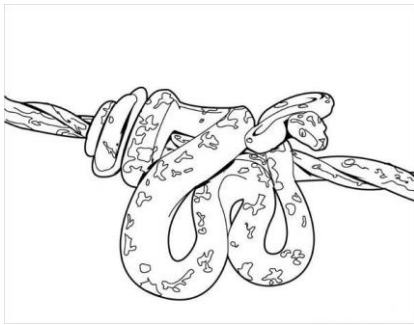
*responsibility*

*resilience*

Thursday 3<sup>rd</sup> March 2022

**SNAKE TAILS INCURSION**  
**Event Date: Thursday 17<sup>th</sup> March 2022**

Our school has again invited the team from 'Snake Tails' to visit and present their interactive performance for our students on **Thursday 17<sup>th</sup> March 2022**. The presentation links to Aboriginal education and the NSW Science syllabus in the following ways:



- In Early Stage 1 there is a focus on the basic needs of reptiles and changes that affect them.
- In Stage 1 there is a focus on growth and development of reptiles as well as environmental effects in more detail.
- In Stage 2 the focus is on life cycles, food chains and distinguishing features of reptiles.
- In Stage 3 the focus is on the survival of Australian reptiles, their environments, along with the detailed structural features of reptiles.

Along with this learning is the opportunity to learn about reptile species of our local area and to help students develop a healthy respect for these important and sometimes dangerous animals. The presenters do bring the four deadly snakes found in NSW, but they remain in tamper-proof boxes and are used for visual recognition only. Students will get the opportunity to interact with harmless pythons, lizards and turtles, if they wish. Through incorporating auditory, visual and kinaesthetic learning techniques during the performance, the presenters aim to reinforce the educational experience for students. There is also time for photos at the end of the performance, which usually initiates questions, laughter and interaction from the students, as well as the teachers.

We believe this is a highly valuable learning experience for all of our students and as such, the school will be covering the entire cost of the incursion.

If you have concerns about your child participating, please speak with your child's teacher. If you would like to withdraw your child from this learning activity, please contact me directly through the school office.

Yours sincerely,

May Ptolemy  
Principal

