



THE VIEW @ LEURA

Newsletter of the Leura Public School Community

Volume 1, Issue 1

Term 1, 2024

LEURA VILLAGE ANZAC DAY SERVICE



9:45am Thursday 25 April

Lone Pine Peace Park,

Cnr Malvern Road and Balmoral St, Leura

Locals and visitors are welcome to attend.

Coming Events

TERM 1

Week 10

01/02 EASTER MONDAY

Week 11

08/04 School Photo Day

12/04 Principal's Assembly

12/04 Last Day of Term 1

TERM 2

Week 1

29/04 School Development Day – STAFF ONLY

30/04 First day of Term 2 – Students return

03/05 School Cross Country

Week 2

07/05 FOIM Recorder Cluster Rehearsal

Week 3 BOOK FAIR

14/05 Grandparents Day

14/05 P&C Meeting

17/05 BMPSSA Zone Cross Country

Week 4

22/05 UBMLC Year 4 Public Speaking Competition

22/05 Simultaneous Storytime

23/05 AECG Meeting

24/05 Jump Rope for Heart – Jump Off Day

What's different about an opportunity class?

Opportunity classes are special classes for students who have high academic potential. They are offered in Years 5 and 6. To be considered for a place in an opportunity class, your parents/carers need to apply, and you need to sit a test. Most students will leave their current school to attend a school with an opportunity class.

Opportunity classes help you learn more quickly and explore concepts more deeply, so you are challenged. They follow the same curriculum as other schools. You will still be able to explore your other interests such as creative and performing arts, sport, debating and social justice. You would be in a class with like-minded peers in an environment that accepts and celebrates high ability.

Is it right for me?

- Do you learn quickly and easily?
- Are you curious and creative?
- Do you enjoy deep investigations?
- Do you love being challenged?
- Do you prefer to learn with like-minded peers?
- If you answered **yes** to any of these, ask your parents/carers to **apply** for you!

I'm interested! What should I do?

- Scan the QR code to visit the **student resource hub** and learn about opportunity classes and the test.
- If you have questions, ask your teacher or the schools you're applying to so you can make an informed decision.
- Tell your parents/carers to **apply online by 20 May 2024**. You don't need coaching to get into an opportunity class.



Student resource

NSW Department of Education

Thinking about applying for an opportunity class?
Year 5 entry in 2025



education.nsw.gov.au/oc

RESPECT

RESPONSIBILITY

RESILIENCE

Principal's Report

Term 1 2024



Dear Parents/Carers,

Dear Parents and Caregivers

Welcome back to 2024! The term is already moving fast with Easter and the school holidays just around the corner.

Thank you to our families for subscribing to Sentral and for using the application to access communication, the calendar, booking interviews and responding for attendance. Soon we will use this for excursions and payments.

Due to the changed nature of our operations with communication, we have reviewed the purpose of the school Newsletter, and the school has decided that this will only be published once each term with the purpose of informing families about special events, celebrations, upcoming news before school holiday periods, information from the P&C and showcasing work. The daily operations of the school are readily communicated through Sentral each week.

Congratulations - Ms. Vikki Willmott Sharp

Our school PBL value this week is timely, 'celebrate achievements' as I would like to congratulate Ms. Vikki Willmott-Sharp for being recognised for her excellence and service to our school community. Ms. Vikki Willmott-Sharp will receive a special Regional Excellence Award from Mr. Tim McCallum, Regional Executive Director - Regional North Directorate.

Ms. Vikki Willmott-Sharp demonstrates outstanding community service and commitment to Leura Public School through her active and passionate engagement with Leura Public School and the Leura Public School P&C for over 16 years. It is not often that parents and carers are part of a school community for over 10 years and, Ms. Vikki Willmott-Sharp not only has been a long-time member of the school as a parent but has been conscientiously demonstrating her respectful and active presence at Leura Public School with strength, empathy and compassion for the betterment of our students and community. Her roles have been varied - P&C President and Vice-President, P&C panel representative, fundraising, election BBQ expert, canteen preparation, cooking and serving are just a small list and do not capture the depth and breadth to her involvement and determination for progress. Whatever the task or event, Ms. Vikki Willmott-Sharp is a friendly face to our families and students on site. Her generational impact - a positive school environment is, appreciated, valued and felt across the whole community.

She embodies the six core values of the NSW Department of Education - service, equity, accountability, trust, integrity and excellence in not only her volunteer work across our community but authentically extends this into her personal relationship with the school.

Ms. Vikki Willmott-Sharp has the personal characteristics of humility, kindness and hard work. She is caring, selfless and generous with her time and is always in the background ensuring that the students and community are at the forefront. She is respectful and inclusive, acknowledging the viewpoints of those in the community. Ms. Vikki Willmott-Sharp is knowledgeable and practical. Whenever there is a community event, she is happily baking, cooking, serving, helping and encouraging others so that a

RESPECT

RESPONSIBILITY

RESILIENCE

successful day or event is experienced by all. Her active listening skills and ability to use her social and emotional intelligence is outstanding. These extraordinary personal skills and character strengths has meant that Ms. Vikki Willmott-Sharp has been a successful and well-respected leader in our school community. With grace, humility and hard work, Ms. Vikki Willmott Sharp is able to lead those around her and wave a special magic which ensures people feel valued, respected and content. She has been instrumental in seeing progress and positive change across the school including the decade long project of Yanema Budjery Gumada. Her efforts in quietly lobbying for positive outcomes, providing feedback and fundraising efforts has meant that the delivery of public education is of the highest standard at Leura Public School. Ms. Vikki Willmott-Sharp will be leaving our great school community at the end of 2024. These will be large shoes to fill and there are many who will miss her friendly face and contributions. It is a privilege to be celebrating this honourable recognition from the NSW Department of Education with her. Congratulations Ms. Vikki Willmott-Sharp and thank you!

Congratulations - Blue Mountains Representative Sport Teams

In the past week we have had students' trial for various Blue Mountains PSSA Representative Teams. Congratulations to Georgia in Stage 3 for being successful in the Basketball team. Congratulations to Daniella and Lucy who are successful in the girls Soccer team. These are outstanding achievements. We wish our students well who are trialling for teams over the coming weeks.

ANZAC Day

On Thursday 25th April, our community is invited to participate in the ANZAC services being held in both Leura and Katoomba.

The Leura service will be held at the corner of Lone Pine and Malvern Street, Leura at 9:45am. School Leaders can meet Mrs. Ptolemy from 9:15am. Some of our school leaders will be presenting a speech and a wreath for this service.

The Katoomba Service will commence from 10:45am with a march from Carrington Place, Katoomba Street. Staff will meet families from 10:30am. The march will be proceeding down Katoomba Street, Waratah Street and Lurline Street to the Katoomba RSL car park. At 11:30am there will be a wreath laying service where our School Captains will participate.

If families are participating in both services please bring some snacks, water and an umbrella in case there is rain at the event/s. Please note that the services require families to stand for long periods.

Jump Rope for Heart

Leura Public School is once again participating in Jump Rope for Heart - a fantastic fundraising and physical activity program by the Heart Foundation. Over the coming weeks your child will learn new skills and increase their physical activity practising these new skills. The program will end with our school wide 'Jump Off Day' on Friday 24th May 2024 (Term 2, Week 4) where your child gets to show off their new skipping skills to their friends.

If you would like to register your child online, you'll get access to additional skipping resources to help your child develop their confidence and skills. The 'Parent and Guardian Guide' flyers were sent home in Week 5 of this term but you can also register and create your own secure webpage at www.jumprope.org.au/parents . A gold coin donation may be brought in on the Jump Off Day as well.

By signing up online, you and your child/ren can:

RESPECT

RESPONSIBILITY

RESILIENCE

- Easily raise funds online
- Track skipping skills progress and earn virtual badges along the way
- Post updates to your page so family and friends can follow their progress
- Access additional skipping resources

Last year, we raised \$600...we are aiming to meet that target again this year!

Thank you for supporting Leura Public School and The Heart Foundation. Happy Skipping.

Paediatrician/Allied health/ Psychologist Requests: Questionnaires/Surveys

At times, families will approach the school regarding the completion of questionnaires for doctors, specialists, and allied health by our staff. Our staff works in partnership with our community and know these surveys and questionnaires are important for our students health and wellbeing. The school does request for a reasonable timeframe to get these forms completed and for parents and caregivers to be aware of the correct process for this to occur. Firstly, it is important that the paperwork arrives to the administration in person or via email. Mrs. Ptolemy as principal will then consider this for approval. Once, and if approved, Mrs. Ptolemy will then delegate to the relevant staff for completion with a reasonable timeline which factors in staff workload and time commitments.

To protect the integrity of the school data provided on these forms, the school will then directly send the questionnaires or surveys to the doctors, specialists, or allied health providers via post. Other times there is an electronic link, and this is done directly with the provider. This is to protect school data and reduce the risk of a data breach. We are unable to return completed forms back to parents and caregivers.

Early arrival of students

During this term, we have seen an increase of students arriving prior to 8:30am to school. Our school provides teacher supervision from 8:45am. It is critical that students are not on site too early as there is no supervision for them. This does pose a risk for student safety especially if there was to be a health and safety matter arise.

Attendance

Leura PS wants to improve school attendance by 1.2% in the next year. To achieve this target, we are wanting families to improve their child/rens attendance rate by one day from 2023 over the next year.

Should families have circumstances that need our school to consider for support, we ask you to reach out and book an appointment to discuss.

Assets

The disability integration ramps are currently being installed across the school. There will be an outdoor lift installed on the stairs going to the Kookaburra courts outside the visual art room. This will be installed later as it is being custom built for our school.

The carpark fence will be installed soon to increase student safety.

The school is seeking screening to reduce the risk of heights for our students. There are some areas of the school that we are making safer.

WHS - Signing in and out

A reminder that all visitors on site must sign in and out either using the QR Code or iPad at the administration prior to entering the school grounds. Additionally, it is important that if any parent, carer, or visitor arrives on school gate during the school day when the school gates are locked, that they walk directly to the administration. This is essential so that our team can maintain duty of care by seeing who is on school site. Furthermore, we must have strong processes for child protection and community safety. On special days we will have tables set up outside near the Koala steps so that people attending the school can sign in.

We understand that at times, a quick visit is what is intended; however, we are unable to waiver on our processes as these are implemented to keep all on site safe.

School Photos

Monday 8th April 2024 is our school photo day. Parents and carers will need to order online and pay MSP, the photography company directly. Please do not send photo envelopes to the school prior to this day. Students will need to wear **full summer uniform**. Students can bring a jumper or jacket to keep warm if the weather is cool. The school will plan to organise the day so that the younger grades are completed first and finishing with the students in Stage 3. A Year 6 photo will be taken and our SRC, House Captains, Library Monitors and School Leaders. Sibling photos will occur on the day during the recess and lunch breaks.

Cross Country

During Term 2, Week 1, our school will be hosting the School Cross Country K-6. This will be on Friday 3rd May. Our staff will require volunteers to support in the running of the event. Normally the school will have the cross country during the middle session. If you can assist some time to support, please email the school so we can let our staff know. All volunteers must complete volunteer induction training prior to assisting. More details will be sent home shortly regarding the school cross country.

Book Fair

During Term 2, Week 3, our school will be hosting Grandparents Day. This will be Tuesday 14th May. Students can have a special grandparent or loved one attend on this day during the morning session and then they are invited to attend the Book Fair in the school library. More details will be coming your way, but we understand letting our community know in advance is important. There will be two sessions - K-2 and 3-6 so that access to the Book Fair is less congested.

Enjoy the remainder of the term. We hope that the Easter break is enjoyable and restful for our families and students.

Warm regards,

May Ptolemy
Principal



POSITIVE BEHAVIOUR FOR LEARNING - Term 1 2024

VALUE OF THE WEEK

Week 7: Consider Personal Space

Week 8: Celebrate Achievements

Week 9: Be in the right place

Week 10: Keep the school environment free of litter

Week 11: Seek assistance when necessary

RESPECT

RESPONSIBILITY

RESILIENCE

OPPORTUNITY CLASS APPLICATIONS

OC Year 5 entry in 2025: Applications are open 4 April-20 May 2024

What are opportunity classes?

Opportunity classes are one of the ways the NSW Department of Education supports high potential and gifted students. The classes help students learn by:

- grouping them with other gifted students
- using specialised teaching methods so students can learn concepts in more detail and more quickly
- supporting their wellbeing needs.

Most students in opportunity classes enjoy learning with peers who have similar abilities and interests. Opportunity classes are not zoned.

Where are they located?

There are 86 primary schools with Year 5 opportunity classes in NSW each year.

- 54 schools are located in metropolitan Sydney
- 31 schools are located in rural or regional centres
- a virtual class, Aurora College, for rural and remote students is available in over 600 authorised host schools.

Students successfully placed attend the opportunity class full time in Years 5 and 6 at the relevant public school. In most cases, students who have accepted a place in an opportunity class will leave their current school to attend the school with the opportunity class.

Should you apply?

If your child learns with greater ease and speed than their classmates, they may benefit from placement in an opportunity class. High potential and gifted children need to be challenged so they remain engaged with their education. Discuss the opportunity with your child and look through the information together on [Opportunity classes \(Year 5–6\) \(nsw.gov.au\)](https://www.nsw.gov.au/education/primary-schools/opportunity-classes)

If you would like to discuss whether you think you should apply, please contact your child's teacher.

Equity provisions

The Equity Placement Model helps to make access to opportunity classes fairer for the following under-represented groups:

- students from low socio-educational advantage backgrounds
- Aboriginal and/or Torres Strait Islander students
- students from rural and remote locations
- students with disability.

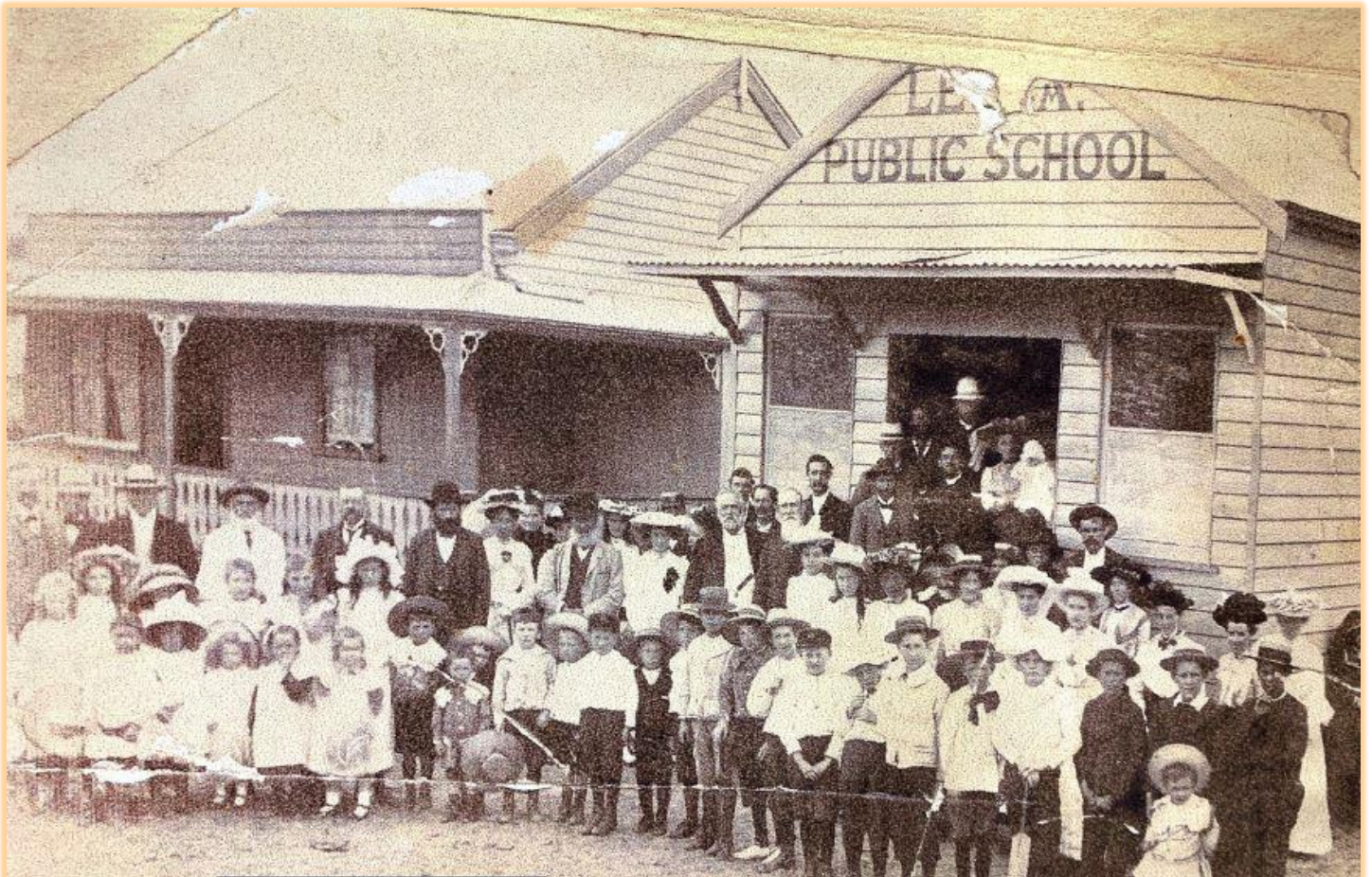
The Equity Placement Model holds up to 20% of places at each school for students from these groups to support an increase in their participation. Students from these groups may be considered for equity placement if their test performance is within 10% of general applicants for each school. Learn more about the placement process and the placement test at [Opportunity classes \(Year 5–6\) \(nsw.gov.au\)](https://www.nsw.gov.au/education/primary-schools/opportunity-classes)

Ready to apply?

Apply online at: [Opportunity classes \(Year 5–6\) \(nsw.gov.au\)](https://www.nsw.gov.au/education/primary-schools/opportunity-classes)

THANK YOU

Sue Collins, Historian, Storyteller and Guide - Mountains Tales for providing our school with these wonderful old photos!



RESPECT

RESPONSIBILITY

RESILIENCE

CLASS NAMES 2024

Class Jackson – Miss. Emma Jinks (K)

Class Thorpe – Mrs. Jacqui Thompson (K/1)

Class Peris – Miss. Chelsea Parker (1/2)

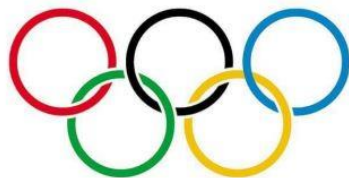
Class Cook – Miss. Jessica Colless (1/2)

Class Alcott – Mrs. Dani Aldred (1/2)

Class Ovens – Mrs. Kaz O'Donohue (MC Support)



PARIS 2024



Class Jones – Mrs. Justine Jinks (3/4)

Class Moneghetti – Mrs. Haley McGown (3/4)

Class de Castella – Mr. Chris Dodds (4/5)

Class Barty – Mrs. Hannah Bucholtz (5/6)

Class Armstrong – Mr. Steve Atkinson (5/6)

FRIDAY 24th MAY

IT'S LEURA PUBLIC SCHOOL'S JUMP OFF DAY!

What to bring:

- *Your best skipping skills
- *Wear something red
- *Gold coin donation



HEART FOUNDATION
JUMP OFF FOR HEARTS

Save the date!

It's time to sharpen our skipping skills! On Friday 24th May, we welcome students to celebrate their skipping achievements this year in the 'Jump Off Day'. Students will participate in a range of skipping activities run by our Sport Captains. We ask students to wear red and bring a gold coin donation for the Heart Foundation.

More information

<https://d107y4pid711nd.cloudfront.net/fbed49f4fc854ab48c0d15f3632598b4.pdf>

RESPECT

RESPONSIBILITY

RESILIENCE

Clean Up



CLEAN UP DAY

RESPECT

RESPONSIBILITY

RESILIENCE

Administrative Information for Parents and Carers

CONTACT DETAILS AND PERMISSIONS

Please ensure that all the relevant contact details for your child/ren are always kept up to date. This includes parent/carer email, phone number, address details as well as any emergency contacts you have listed for your child. If you are not sure if the school has all the current details, please get in touch via phone or email.

It is critical that parents and carers ensure that our school has written permission so that students can be picked up and dropped off by someone other than a parent/carer and or emergency contact. This is the same procedure for our school when we are sharing information with people other than parents and carers. We must have clear and written permission to exchange information.

STUDENTS WITH MEDICAL NEEDS

At LPS we have a number of students with medical needs. In particular, some students suffer allergic reactions to foods such as nuts and nut products. Please consider alternate foods to nuts and their products when preparing your child's food for the school day. Leura Public School is a NUT AWARE school. Please also remember to update the school should your child's medical needs change at anytime.

LATE ARRIVALS/EARLY LEAVERS

Attendance Matters. Like many schools in NSW, Leura Public School has a procedure to record the attendance of students who arrive after the start of the school day at 9:15am or need to leave school before the end of the school day at 3:00pm.

School begins at 9:15am when each class will mark the roll. All students are required to report to the administration office if they arrive after the school day has commenced. It is important that when a student arrives late to school, whether accompanied by an adult or on their own, they inform one of the office staff that they are present. (Gates are locked at 9:15am, start of school, so after this time a student is considered late.) Students will be given a late arrival pass and then walk to class. Should a student have additional needs and require support, a School Learning and Support Officer (SLSO) will be called to assist the student in getting to their class. At times late comers neglect to let the office know of their arrival and therefore could be marked absent for the whole day.

We ask parents and carers to not enter classrooms during the school day as this is a cause of disruption for our students learning. This procedure is also the same for students who are being picked up prior to 3:00pm. All students must exit via the school administration.

For students who are leaving school before the end of the school day, their parent/carer must report to the school office where the office staff will process the student's early departure from school and an early leaver pass will be produced. Office staff will advise the class teacher by phone of the student leaving early and request the student come to the office to meet their parent/carer. Students who require support will be accompanied to the office by a member of staff.

All parents/carers are required to wait at the school office to minimise disruption to classrooms and curriculum delivery that is in progress. Parents/carers are able to enter the school grounds before 9:15am or after 2:45pm (when the gates are open) to drop off or collect their children.

ABSENCE EXPLANATION

Department of Education guidelines require written explanation of a student's absence from school. There are a few different ways to submit an explanation of absence for your child/ren: email via the school email, Sentral Parent Portal, a written note sent into the school office with your child, and SMS absence notifications are automatically sent out at 10:30am each day for students who have been marked absence with no prior explanation received – parents/carers can respond to this automatic SMS.

UNIFORM SHOP

The uniform shop is open on Tuesdays 9:00am – 10:00am and is located off the sensory space, between Class Ovens and Class Thorpe. The uniform shop is run by the Leura Public School P&C Association, and all payments are to be made to the LPS P&C Association and *not* Leura Public School. Anyone wanting to visit the uniform shop is required to sign in at the front office first.

RETURNING NOTES AND RECEIPTING OF MONEY

Permission notes and cash payments can be made at the front office. Please ensure if paying by cash the correct money and permission notes are in an envelope or bag, clearly marked with the student's name, class, and what payment/event/excursion the money is for. Please do not send loose money in as admin staff may not know who or what it is meant for. Notes sent home with students will be published on the school website [Home - Leura Public School \(nsw.gov.au\)](http://Home - Leura Public School (nsw.gov.au)) and via Sentral Parent Portal. Extra paper copies of notes can be obtained from the school office.

When returning notes/payments by the DUE DATE please be aware that cash payments can be accepted by the office up until 3:00pm on the due date, Online Payment can be made up until 11:59pm on the due date. **If a note states NO LATE PAYMENTS WILL BE ACCEPTED and you are unable to meet the deadline you MUST contact the school prior to discuss. If no communication has been made and payment not received by the due date then the student will not be allowed to attend.*

SPECIAL RELIGIOUS EDUCATION/SPECIAL EDUCATION IN ETHICS (SRE/SEE)

SRE/SEE (Scripture and Ethics) is on Thursdays from 2:00pm. Students have been placed in the SRE/SEE group that they were enrolled in at the end of 2023. Please note that this is dependent on the current number of volunteers available for each required group. Please be aware that any changes to student's SRE/SEE selection must be in writing by parents/carers and submitted at least 7 days prior to change taking effect.

LOST PROPERTY

Located in the administration building. There is a clothes rack in the foyer where lost items of clothing will be displayed. Items will be sorted weekly. All items with current students' names will be returned to the children. Items without names or names of students no longer enrolled at LPS will either be sent to the uniform shop or disposed of. Lunchboxes and drink bottles will be collected in a tub outside the office foyer, on the verandah adjoining the COLA. Please note that due to health and WHS requirements any unclaimed lunchboxes and drink bottles will be disposed of weekly.

MESSAGES FOR CHILDREN

Sometimes parents/carers may need to get a message to students about home time arrangements. To allow enough time to advise children of any changes to their routine please ensure any messages that are required to be passed on to children are communicated to the office by 2:45pm.

NEWSLETTERS AND 'THE WEEK AHEAD'

Leura Public School will issue a newsletter once per term. The newsletter is published on the school website and the Sentral Parents Portal. For weekly information and reminders please refer to 'The Week Ahead' and the calendar, which is updated regularly so families can plan ahead, published on the Sentral Parents Portal.

VOLUNTARY SCHOOL CONTRIBUTION

The Voluntary School Contribution for 2024 is \$50.00 per family (not per student). In 2024 the Voluntary School Contribution will be used for resources supplementing the new curriculum. Invoice Statements with payments required for activities/excursion/events that students are participating in are issued once per term. Statements will include the 2024 Voluntary School Contribution but families are reminded that this contribution is voluntary, not mandatory.

OFFICE HOURS AND GATE ACCESS

The school office hours are 8:30am-3:30pm. Supervision by staff begins at 8:45am. School gates are open in the morning 8:45am-9:15am. If students are arriving to school prior to 8:45am access is via GATE 3 at the school hall; this will ensure that students are not left outside the school whilst waiting for the electronic MAIN gate to be opened if the office is busy or unattended. Throughout the day, up until 3:30pm, the MAIN gate is the only gate for visitors to request access to our school.



Laura Library

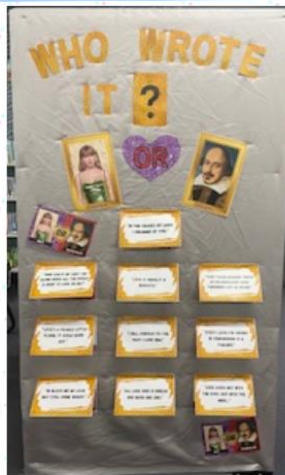
NEWS

Term 1 Week 6

In our Reading Era!

Even the school library has not been immune to the Eras tour phenomenon. We've had some fun working out 'Who wrote it? Shakespeare or Tay Tay?' in our interactive display.

We have a wonderful new group of dedicated library monitors who have begun their training in shelving, display-making and book contacting. They will receive their badges in week 11.



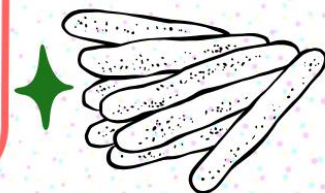
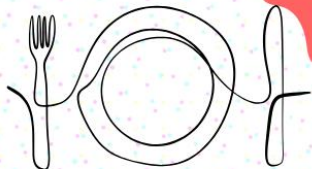
What's happening this term?

- The Premier's Reading Challenge has opened
- Kindergarten are learning to use the library
- Stage 1 are looking at the features of fiction
- Stage 2 are focusing on characters in fiction
- Stage 3 are making book trailers



Laura Library Book Tasting cafe

Jazz music played in the background, checkered tablecloths, candles and red roses adorned the tables and a specialised teacher librarian 'waitress' was on hand to serve and recommend as students in stage 2 and 3 enjoyed a book tasting in week 5. The 'Book Cafe' took over the library space and students were able to get a 'taste' of a range of different genres of books to see what they liked, or maybe to try something new. We all had so much fun and students are looking forward to the next Book Cafe library takeover!



RESPECT

RESPONSIBILITY

RESILIENCE

Is going to school really difficult for your child?



When a child becomes worried about going to school, refuses to go to school or struggles to stay at school, they may be experiencing school anxiety or phobia. We call this *school refusal*.

School refusal is an issue that may cause emotional distress for your child and family. It is important to recognise that your child's behaviour is not deliberate or defiant.

Children can communicate their anxiety about school through a range of behaviours:

- Difficulty getting out of bed
- Dragging out morning routines
- Tearfulness, emotional distress or complaints of feeling sick
- Difficulty parting with you at school
- Spending time out of class, or in the school office or sick bay
- Wanting to go home early, and avoiding school after weekends, school holidays, or on sport or camp days

Tips for helping your child return to school

- Make time to connect, show empathy and acknowledge they're having a hard time. Try to work out what is worrying them
- Discuss solutions together and support them to choose one to try
- Speak with their school as soon as possible. Let your child know that everyone wants them to feel comfortable about going to school

- Set up and stick to good night-time and morning routines
- Limit access to electronics during school hours unless for school work
- Encourage them to finish homework
- Don't encourage fun activities such as shopping, video games or treats during school hours
- Don't punish or blame them if they are unable to go to school
- Be sure to notice and praise any efforts and small successes

Support options

- Talk with your child's school to develop a plan to address any difficulties. Be persistent and ask for more help from the classroom teacher, school counsellor, or assistant principal
- If your child is complaining of physical aches and pains have them checked by your GP
- See your local GP for a Mental Health Care Plan or referrals for further care, such as a paediatrician or psychiatrist
- Contact your local Community Health Centre for free counselling and support for yourself on 1800 222 608 (or 02 4560 5714 in the Hawkesbury area)
- If nothing else is working, visit education.nsw.gov.au for information on alternative schooling options

Additional online resources

- raisingchildren.net.au
- headspace.org.au
- relationshipsnsw.org.au

School refusal in primary school: Myths vs facts

MYTH

FACT

I'm a bad parent because I cannot get my child to school

Difficulty going to school is due to a number of factors and not a reflection of parenting skills. Remember to have compassion for yourself and that help is available.

My child is just being naughty or lazy

School refusal is not a matter of misbehaviour but a child's way of telling you how they feel about going to school. The reasons for avoiding school are complex and vary for each child. Working out the underlying cause of their distress will help you get them the right support.

No one else has this much trouble getting their child to school

Up to 5% of all school children in Australia have difficulty getting to or staying at school. Parents are not alone however you may feel isolated about it at times. It is important to seek support for yourself as well as for your child.

I should just force my child to go to school

Parents should not threaten, shame or punish their child for not going to school. Continue showing care and compassion, and work with them, their school and health professionals to improve their confidence and attendance. Small steps may work best.

It's normal for kids to not want to go to school

If this happens more frequently and your child gets anxious or upset about going to school, then this is a problem that needs attention right away.

There's no harm in missing a few days here and there

Missing one day per week adds up to 2 months of missed school in one year. Poor attendance in primary school leads to bad habits and can have serious long term effects on a child's learning, social development, family relationships, health and wellbeing.

It's not a big deal

Children who repeatedly miss school also miss critical learning and social opportunities. By law all children in NSW are required to attend school every day.

They will grow out of it

This issue is unlikely to go away on its own and may get worse as your child gets older. Ongoing difficulties make it less likely your child will complete school or join the workforce and may increase their risk of mental health problems.

Taking care of yourself

School refusal is difficult to manage and stressful for parents and carers. It's important for your own health and wellbeing to seek support from friends, family and professionals. You can also join an online support group. Remember: when you are well and feel supported you will be more able to help your child manage their distress and return to school.

Nepean Blue Mountains Local Health District

PO Box 63
Penrith NSW 2751
Telephone: (02) 4734 2000
Fax: (02) 4734 3737
Email: NBMLHD-mail@health.nsw.gov.au

Web: nsw.gov.au/health/nbmlhd
Facebook: www.facebook.com/NBMLHD
Instagram: instagram.com/nepeanbluemountains
Twitter: @NBMLHD
YouTube: Nepean Blue Mountains Local Health District

© Nepean Blue Mountains Local Health District. This work is copyright. It may be produced in whole or in part for study or training purposes subject to the inclusion of acknowledgement of the source and no commercial usage or sale. Reproduction for purposes other than those indicated requires permission from Nepean Blue Mountains Local Health District.



First Day of Kindy 2024

RESPECT

RESPONSIBILITY

RESILIENCE



SWIMMING CARNIVAL

RESPECT

RESPONSIBILITY

RESILIENCE

P&C EASTER COLOURING IN COMPETITION WINNERS!!!!

Thank you to everybody that entered. All our entries were so amazing and colourful.

Our winners from each stage we announced at the Easter Hat Parade.

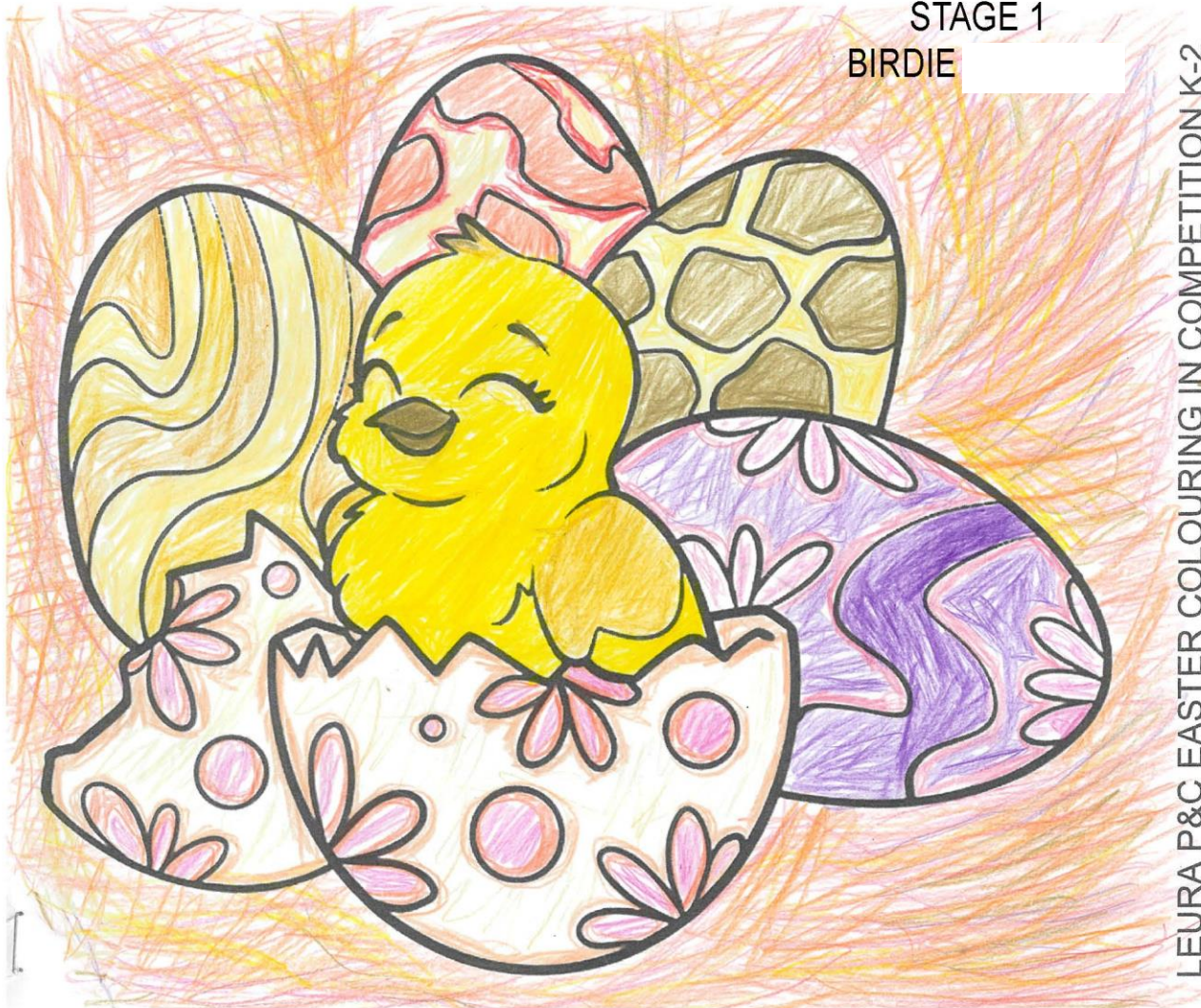
EARLY STAGE 1
ASTRID



LEURA P&C EASTER COLOURING IN COMPETITION K-2

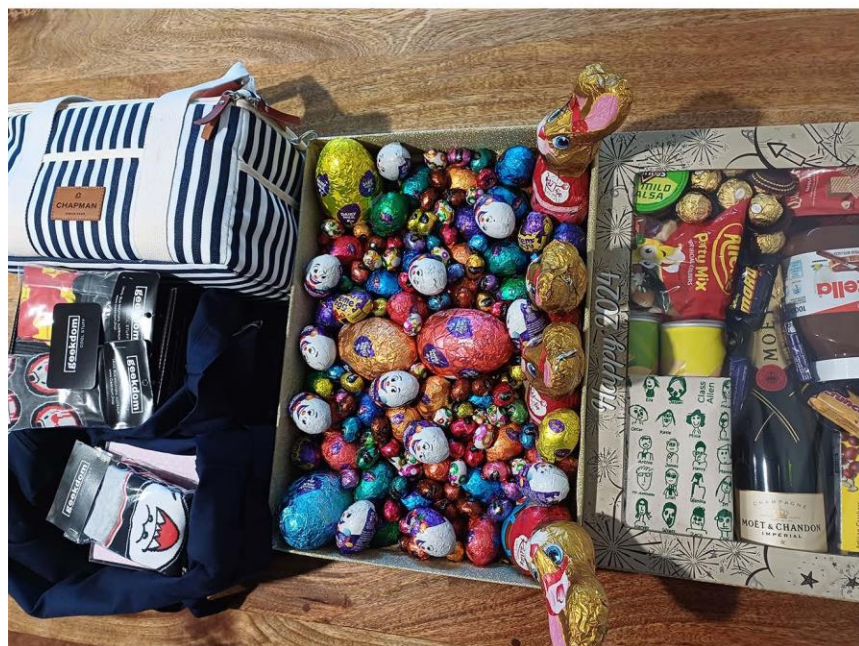
NAME: Astrid
CLASS: Jackson
AGE: 5

STAGE 1
BIRDIE



LEURA P&C EASTER COLOURING IN COMPETITION K-2

NAME: Birdie
CLASS: COOK 4/2
AGE: 7



P&C EASTER RAFFLE

Leura P&C would like to thank all our families for participating in our Easter Raffle, we made over \$1600.

A big thank you to our prize donations from Big W Katoomba, Chapman Real Estate, Flair Dancewear and Geekdom.

Vanika
STAGE 2



LEURA P&C EASTER COLOURING IN COMPETITION 3-6

Madeline
STAGE 3



RESPECT

RESPONSIBILITY

RESILIENCE



Farmers Markets

Keep an eye out on the 1st Friday of every month.

After school you will see our garden volunteers outside the Kindy rooms.

Everything on offer is free and from our very own school garden.

If you are interested in helping out in the garden email us lpssc.president@gmail.com

Spriggy Schools

Introducing Spriggy Schools for online ordering

How to get started

1. Download the Spriggy Schools app
2. Create a profile for your child
3. Conveniently place orders online

Download the app now!



Check the T&C's and TMD for further information

